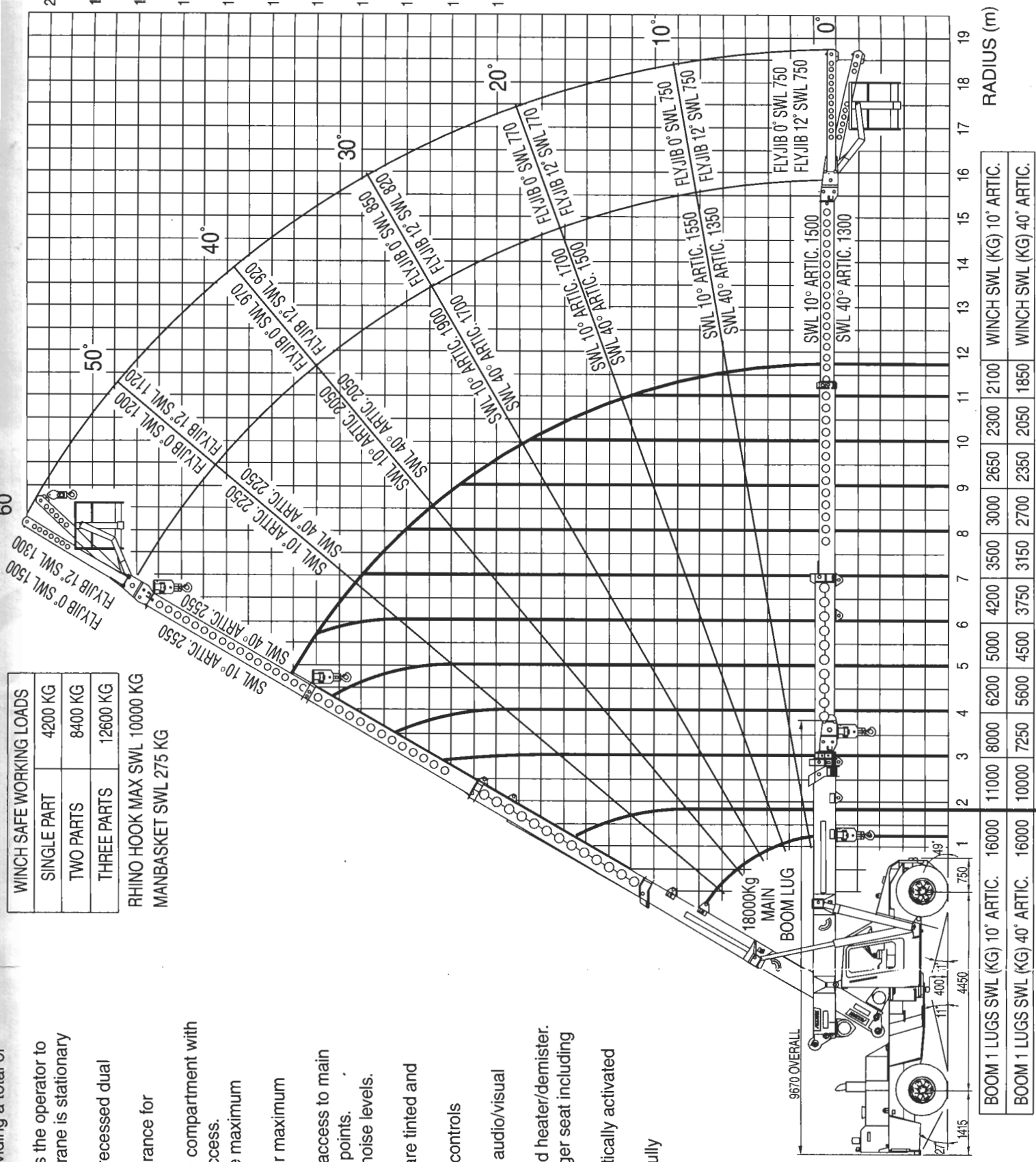


80° of slewing arc.

- Exclusive hold brake attachment allows the operator to slew the crane through 80° whilst the crane is stationary and the holding brake is activated.
- 32mm thick steel front plate, with fully recessed dual headlights and blinkers.
- Boom head design with maximum clearance for machinery installation.
- 800 litre front mounted sling and tackle compartment with opening front and top doors for easy access.
- Wide stance boom lift cylinders provide maximum operator's vision.
- Total engine cover hinged rearwards for maximum access to engine and service points.
- Front bonnet cover hinged to allow full access to main hydraulics, pilot hydraulics and service points.
- Upswept exhaust muffler for minimum noise levels.
- Large, zone tinted front windscreen.
- Roof, rear and quarter glass windows are tinted and allow greater visibility.
- Full binnacle type instrumentation and controls positioned for ease of operation.
- Robway 1502 Safe Load Indicator with audio/visual overload pre-warning.
- 2 speed windscreen wipers, washer and heater/demister.
- Suspension driver's seat, fixed passenger seat including seat belts.
- Full power orbital steering with automatically activated DC emergency steering.
- Heavy duty front and rear bodies with fully incorporated checker plate mudguards.
- Work lights front and rear.
- Amber rotating light to rear bonnet.

WINCH SAFE WORKING LOADS	
SINGLE PART	4200 KG
TWO PARTS	8400 KG
THREE PARTS	12600 KG

RHINO HOOK MAX SWL 10000 KG  
MANBASKET SWL 275 KG



BOOM 1 LUGS SWL (KG) 10° ARTIC.	16000	11000	8000	6200	5000	4200	3500	3000	2650	2300	2100	WINCH SWL (KG) 10° ARTIC.
BOOM 1 LUGS SWL (KG) 40° ARTIC.	16000	10000	7250	5600	4500	3750	3150	2700	2350	2050	1850	WINCH SWL (KG) 40° ARTIC.

1.8 Metres

NOTE: 1. UNLESS OTHERWISE STATED ALL SWL'S REFER TO LIFTING ON THE WINCH, FOR LIFTING LUG CAPACITIES PLEASE REFER TO THE SPECIFIC LOADCHART.  
2. THIS RADIUS CHART IS A SUMMARY OF LOADCHART 16C1204-. REFER TO THE CRANE'S LOADCHART BEFORE ATTEMPTING A LIFT.