



TADANO HYDRAULIC ROUGH TERRAIN CRANE

SPEC. SHEET No. TR-250E-2-00201/EX-12

TR-250EX

Left hand steering

GENERAL DATA

CRANE CAPACITY	25,000 kg at 3.0 m
BOOM	4-section, 8.6 m - 26.9 m
DIMENSIONS	
Overall length	approx. 10,570 mm
Overall width	approx. 2,560 mm
Overall height	approx. 3,450 mm
WEIGHTS	
Gross vehicle weight	approx. 24,100 kg
- front axle	approx. 12,300 kg
- rear axle	approx. 11,800 kg
PERFORMANCE	
Max. travelling speed	computed 50 km/h
Gradeability(tan θ)	computed 64 % (at stall)

CRANE SPECIFICATIONS

MODEL
TR-250EX

● CAPACITY
25,000 kg at 3.0 m

BOOM
4-section full length power telescoping boom of box construction with 4 sheaves at boom head. 3rd boom and top boom telescope synchronously by means of a double-acting cylinder, an extension cable and a retraction cable. Hydraulic cylinders fitted with holding valves.

Fully retracted length..... 8.6 m
Fully extended length..... 26.9 m
Extension speed..... 15.3 m in 78 s

JIB
Single staged lattice swingaround boom extension. Triple offset(5°/25°/45°)type. Single sheave at jib head. Stores alongside base boom section.
Length..... 7.5 m

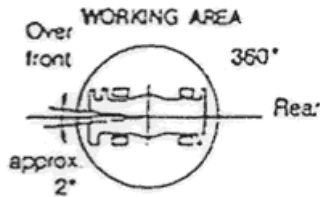
SINGLE TOP (AUXILIARY BOOM SHEAVE)
Single sheave. Mounted to main boom head for single line work.

ELEVATION
By a double-acting hydraulic cylinder, fitted with holding valve.
Elevation speed..... 0° to 62° in 42 s

TADANO LTD.

TOTAL RATED LOADS

SPEC. SHEET No. TR-250E-2-00201/EX-12

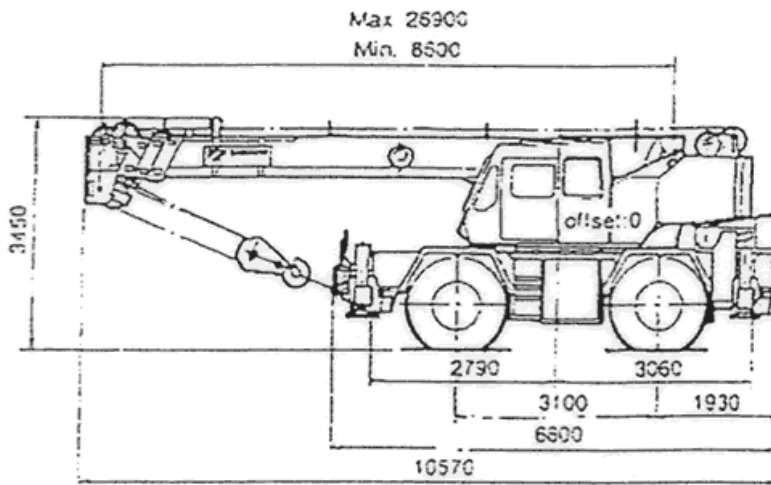


Without outriggers "Over front" operation should be performed within 2 degrees in front of chassis

NOTES FOR "ON TIRES" TABLES

- Total rated loads shown in the table are based on condition that crane is set on firm level surface, with suspension lock applied. Those above bold lines are based on tire capacity and those below, on crane stability. They are based on actual working radii increased by tire deformation and boom deflection.
- "STATIONARY" load capacities do not exceed 75 % of tipping loads. "CREEP" load capacities do not exceed 66 2/3 % of tipping loads.
- The weight of the hook (270 kg for 25 ton capacity, 60 kg for 3 ton capacity), slings and all similarly used load handling devices must be added to the weight of the load.
- For total rated of single top, reduce the 250 kg from the relevant boom total rated load. Total rated load of single top should not exceed 3,000 kg.
- Without outriggers lifting with "Jib" is not permitted. Maximum permissible boom length is 20.8 m.
- Free-fall operation should not be performed without extending outriggers.
- CREEP is motion for cranes not to travel more than 60 m in any 30 min. period and to travel at the speed of less than 1.6 km/h.
- During "CREEP" duties travel slowly and keep the lifting load as close to the ground as possible, and especially avoid any abrupt steering, accelerating or braking.
- Do not operate the crane while carrying the load.
- Tires should be inflated to their correct air pressure of 6.75 kg/cm².

DIMENSIONS



Overall width.....	2,550 mm	Tread(track) - Front.....	2,100 mm
Tail swing radius.....	3,070 mm	- Rear.....	2,100 mm

Specifications are subject to change without notice

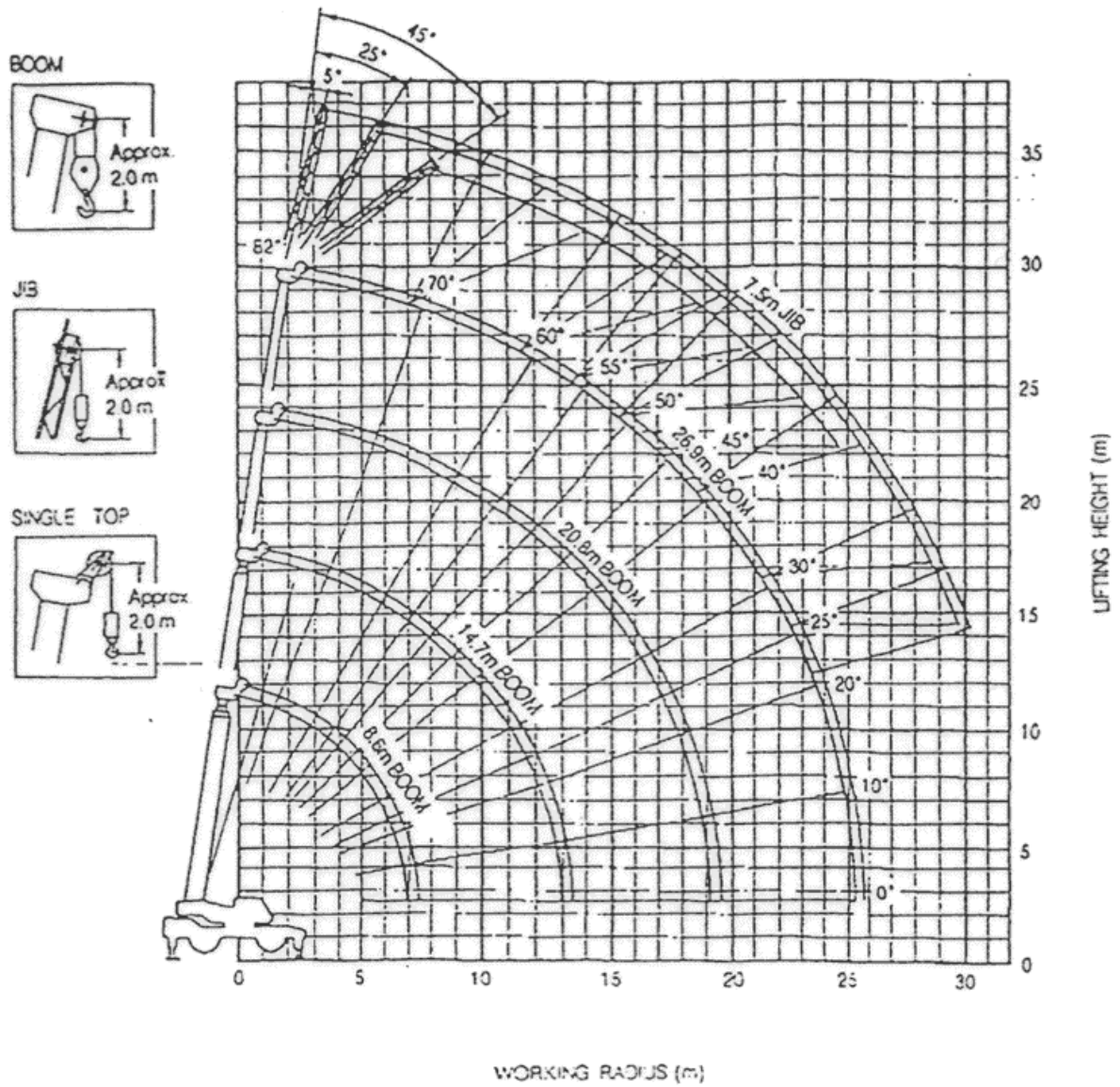


TADANO LTD.

4-12, Kamezawa 2-chome
Sumida-ku, Tokyo 130, Japan
Tel: (03)3621-7750
Telex: J23755 TADANO
Fax: (03)3621-7783
Cable: TADANRCC TOKYO

WORKING RADIUS - LIFTING HEIGHT

SPEC. SHEET No.TR - 250E - 2 - 00201/EX - 11



NOTE:

The above lifting heights and boom angles are based on a straight (unladen) boom, and allowance should be made for boom deflection obtained under laden conditions.

TOTAL RATED LOAD

SPEC.SHEET No. TR-250E-2-00201/EX-11

ON OUTRIGGERS

Unit : kg

Outriggers fully extended (360°)								
B \ A	7.5m				E	7.5m		
	8.6m	14.7m	20.8m	26.9m		D	5°	25°
3.0m	25,000	16,500			80°	3,000	2,000	1,500
3.5m	20,000	16,500	10,000		75°	3,000	2,000	1,500
4.0m	18,500	16,500	10,000	7,000	70°	2,850	2,000	1,400
4.5m	16,500	15,100	10,000	7,000	65°	2,350	1,800	1,300
5.0m	15,000	14,000	10,000	7,000	60°	1,950	1,600	1,250
5.5m	13,700	13,000	10,000	7,000	55°	1,700	1,400	1,200
6.0m	12,500	12,000	9,600	7,000	50°	1,350	1,250	1,150
6.3m	11,500	11,200	9,200	7,000	45°	1,000	900	800
7.0m		10,000	8,700	7,000	40°	800	700	
8.0m		8,000	7,800	6,700	35°	650	550	
9.0m		6,500	7,000	6,250	30°	500	400	
10.0m		5,450	5,700	5,600	25°	400	300	
11.0m		4,550	4,600	5,000	20°	300		
12.0m		3,800	4,150	4,300				
13.0m			3,600	3,750				
14.0m			3,150	3,300				
15.0m			2,750	2,900				
16.0m			2,400	2,550				
17.0m			2,100	2,300				
18.0m			1,850	2,100				
19.0m			1,550	1,800				
20.0m				1,650				
22.0m				1,350				
24.0m				1,000				
25.0m				900				

- A: Boom length
- B: Working radius
- C: Jib length
- D: Jib offset
- E: Boom angle

NOTES FOR "ON OUTRIGGERS" TABLE

- Total rated loads shown in the table are based on condition that crane is set on firm level surface. Those above bold lines are based on crane strength and those below, on its stability.
- Total rated loads below bold lines do not exceed 75 % of tipping load.
- The weight of the hook (270 kg for 25 ton capacity, 60 kg for 3 ton capacity), slings and all similarly used load handling devices must be added to the weight of the load.
- For total rated load of single top, reduce the 250 kg from the relevant boom total rated load. Total rated load of single top should not exceed 3,000 kg.
- Free-fall operation should be performed without any load on the hook.
- Standard number of part lines for each boom length is as shown below. Load per line should not surpass 3,200 kg for main winch and 3,000 kg for auxiliary winch.

Boom length (m)	8.6	14.7	20.8	26.9	Jib/Single top
No. of part lines	8	6	4	4	1

ON TIRES

Unit : kg

B \ A	Stationary						Creep					
	Over front			360°			Over front			360°		
	8.6m	14.7m	20.8m	8.6m	14.7m	20.8m	8.6m	14.7m	20.8m	8.6m	14.7m	20.8m
3.0m	15,000	10,000		9,200	8,000		11,000	8,000		7,000	5,200	
3.5m	13,500	10,000	7,000	7,200	7,000	6,000	10,500	8,000	6,000	6,200	5,200	3,800
4.0m	11,000	10,000	7,000	6,000	5,600	5,000	9,500	8,000	6,000	5,100	4,700	3,800
4.5m	9,100	8,300	7,000	4,900	4,500	4,500	8,000	7,200	6,000	4,100	3,800	3,800
5.0m	8,000	7,200	6,500	4,600	3,700	4,100	6,900	6,200	6,000	3,300	3,100	3,300
5.5m	6,900	6,400	6,000	3,400	3,200	3,500	5,900	5,500	6,200	2,700	2,600	2,800
6.0m	6,100	5,700	5,400	2,800	2,700	3,000	5,200	4,900	4,700	2,400	2,200	2,400
6.3m	5,200	4,900	4,900	2,400	2,300	2,600	4,500	4,200	4,200	2,000	1,800	2,100
7.0m		4,400	4,500		1,900	2,300		3,700	3,800		1,600	1,800
8.0m		3,400	3,700		1,300	1,700		2,800	3,200		1,000	1,400
9.0m		2,600	3,000		900	1,300		2,200	2,500		700	1,000
10.0m		2,100	2,500		600	900		1,700	2,000			700
11.0m		1,700	2,000			700		1,400	1,700			
12.0m		1,300	1,700					1,100	1,400			
13.0m			1,400						1,100			
14.0m			1,100						900			
15.0m			900						700			
16.0m			700						600			
17.0m			600									

A: Boom length B: Working radius